



REDUCING CATALOGUE

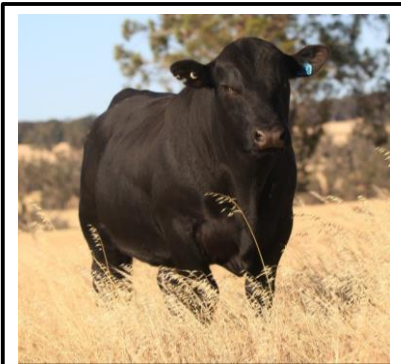
2019 Sale Bulls

26 Herd Book Register (HBR) Angus Bulls remaining

INCLUDES 4 BULLS NOT OFFERED PREVIOUSLY: LOTS 71, 72, 73, 75

(these bulls were subject to semen testing which they have passed)

Updated 17 March 2019



Ardcairn N84, son of Ardcairn K7
Photo by Bob Garrant, The Countryman



**An Ardcairn
Accuracy Assured Catalogue**

EBV and \$Index information is
downloaded directly from the
Angus Australia Website

**Contact:
Jim and Pam McGregor**

P O Box 301
Kojonup WA 6395
T: 08 9831 0401
M: 0417 942 326
E: maybenup@bigpond.com
www.ardcairnieangus.com.au

Selling Agents:



Kojonup office 08 9831 1088
Jamie Hart 0427 910 955

zoetis

Each bull in this catalogue
qualifies for Zoetis **STAR
BREEDER PROGRAM**
www.starprogram.com.au

ARDCAIRNIE ANGUS REDUCING CATALOGUE - 17 MARCH 2019

BULL NAME Date of Birth SIRE (See Reference Sires) Sire of Dam DAM Dam of Dam	January 2019 figures.																							
	Lot No.	Price Register	Calving Ease Direct (%)	Calving Ease Dtrs (%)	Gest. Lenth (Days)	Birth Wt. (kg)	200 Day Wt. (kg)	400 Day Wt. (kg)	600 Day Wt. (kg)	Mature Cow Wt. (kg)	Milk (kg)	Scrotal Size (cm)	Days to Calving (days)	Carcase Wt (kg)	Eye Muscle Area (sq.cm)	Rib Fat (mm)	Rump Fat (mm)	Retail Beef Yield (%)	IMF (%)	NFI-F (kg / day)	Angus Breeding Index (\$)	Domestic Index (\$)	Heavy Grain Index (%)	Heavy Grass Index (%)
ARDCAIRNIE N10^{SV} 8-Apr-2017 MAR INNOVATION 251[#] TC ABERDEEN 759 [#] ARDCAIRNIE PROUDRAM K2 [#] ARDCAIRNIE PROUDRAM H55 [#]	3	\$ 4,250	+1.9	+2.7	-7.6	+3.5	+48	+81	+102	+76	+17	+2.5	-4.7	+58	+8.8	-0.4	-0.5	+2.2	+0.9	+0.24	\$119	\$120	\$115	\$121
HBR		50%	42%	69%	75%	70%	71%	74%	67%	56%	73%	38%	61%	61%	61%	61%	57%	57%	46%					
ARDCAIRNIE N11^{SV} 9-Apr-2017 A A R TEN X 7008 S A^{SV} MILWILLAH GATSBY G279 ^{PV} ARDCAIRNIE NEUTRON L55 [#] ARDCAIRNIE NEUTRON H119 [#]	4	\$ 4,500	+0.9	+1.3	-3.8	+2.9	+48	+86	+109	+74	+17	+1.4	-5.4	+66	+6.2	-0.7	-1.5	+1.0	+2.1	+0.41	\$126	\$120	\$134	\$122
HBR		55%	49%	66%	74%	70%	70%	73%	68%	61%	72%	45%	62%	62%	63%	63%	59%	59%	51%					
ARDCAIRNIE N15^{SV} 11-Apr-2017 ARDCAIRNIE F96^{SV} DUNOON GABBA G548 ^{PV} ARDCAIRNIE ELMA L58 [#] ARDCAIRNIE ELMA C200 [#]	7	\$ 4,250	-0.2	+0.9	-4.0	+4.8	+47	+82	+106	+94	+14	+2.0	-5.2	+70	+7.3	-0.5	-0.8	+1.3	+1.7	+0.01	\$118	\$113	\$123	\$115
HBR		49%	40%	66%	75%	70%	71%	73%	67%	58%	73%	40%	62%	61%	62%	62%	57%	58%	51%					
ARDCAIRNIE N48^{SV} 25-Apr-2017 ARDCAIRNIE K244^{SV} ARDCAIRNIE G33 ^{SV} ARDCAIRNIE GEORGINA L130 [#] ARDCAIRNIE GEORGINA D249 [#]	14	\$ 4,000	+4.1	+3.0	-5.4	+2.6	+48	+86	+105	+82	+16	+1.1	-3.3	+65	+6.3	-1.2	-1.7	+1.4	+1.5	+0.05	\$115	\$119	\$115	\$116
HBR		39%	30%	52%	72%	66%	67%	70%	63%	46%	68%	32%	55%	54%	56%	57%	50%	48%	38%					
ARDCAIRNIE N97^{SV} 5-May-2017 V A R GENERATION 2100^{PV} ARDCAIRNIE G64 ^{SV} ARDCAIRNIE PROUDRAM K185 [#] ARDCAIRNIE PROUDRAM H254 [#]	29	\$ 4,250	-1.1	+0.7	-3.6	+4.3	+45	+77	+86	+68	+15	+2.0	-4.5	+55	+7.6	-0.9	-1.2	+1.8	+1.9	+0.22	\$104	\$113	\$105	\$102
HBR		49%	43%	61%	74%	70%	71%	74%	67%	54%	72%	35%	60%	60%	60%	61%	55%	55%	45%					
ARDCAIRNIE N126^{SV} 11-May-2017 WAITARA PIO FEDERAL F73^{SV} COONAMBLE ELEVATOR E11 ^{PV} ARDCAIRNIE INFANTA J98 [#] ARDCAIRNIE INFANTA B65 [#]	34	\$ 4,500	+1.8	+1.8	-4.6	+3.3	+50	+91	+123	+88	+19	+0.9	-1.9	+75	+6.3	-1.7	-2.2	+0.7	+1.4	+0.16	\$116	\$112	\$116	\$118
HBR		52%	44%	69%	74%	70%	71%	74%	69%	61%	73%	44%	64%	63%	64%	64%	59%	61%	56%					
Breed Average EBVs / \$Indexes			+0.2	+0.4	-4.0	+4.3	+44	+81	+106	+91	+15	+1.8	-4.2	+59	+5.1	+0.0	-0.2	+0.4	+1.7	+0.19	\$114	\$108	\$119	\$111

ARDCAIRNIE ANGUS REDUCING CATALOGUE - 17 MARCH 2019

BULL NAME Date of Birth SIRE (See Reference Sires) Sire of Dam DAM Dam of Dam	January 2019 figures.																							
	Lot No.	Price Register	Calving Ease Direct (%)	Calving Ease Dtrs (%)	Gest. Lenth (Days)	Birth Wt. (kg)	200 Day Wt. (kg)	400 Day Wt. (kg)	600 Day Wt. (kg)	Mature Cow Wt. (kg)	Milk (kg)	Scrotal Size (cm)	Days to Calving (days)	Carcase Wt (kg)	Eye Muscle Area (sq.cm)	Rib Fat (mm)	Rump Fat (mm)	Retail Beef Yield (%)	IMF (%)	NFI-F	Angus Breeding Index (\$)	Domestic Index (\$)	Heavy Grain Index (%)	Heavy Grass Index (%)
ARDCAIRNIE N158 ^{SV} 17-May-2017 V A R GENERATION 2100 ^{PV} TE MANIA BARDO B275 ^{SV} ARDCAIRNIE FLORAL J170 [#] ARDCAIRNIE FLORAL F162 [#]	41	\$ 4,500	+0.8	+2.4	-4.5	+3.9	+50	+81	+105	+95	+13	+1.2	-4.2	+65	+8.3	-0.9	-2.1	+2.1	+1.6	-0.08	\$119	\$116	\$123	\$116
		HBR	50%	45%	64%	74%	70%	71%	74%	68%	55%	72%	37%	60%	60%	61%	61%	56%	56%	46%				
ARDCAIRNIE N161 ^{SV} 17-May-2017 KAROO D145 GENERATOR G220 ^{PV} ARDCAIRNIE F132 ^{SV} ARDCAIRNIE GEORGINA J43 [#] ARDCAIRNIE GEORGINA G75 [#]	42	\$ 4,000	+1.7	+0.2	-5.6	+2.3	+41	+75	+104	+70	+19	+0.8	-6.0	+58	+8.3	+2.1	+1.8	+0.0	+1.9	+0.46	\$124	\$110	\$125	\$122
		HBR	49%	43%	64%	74%	70%	71%	74%	67%	58%	72%	39%	60%	60%	61%	62%	56%	56%	46%				
ARDCAIRNIE N162 ^{SV} 17-May-2017 ARDCAIRNIE H10 ^{SV} ARDCAIRNIE E36 ^{SV} ARDCAIRNIE ISOBEL J159 [#] ARDCAIRNIE ISOBEL C130 [#]	43	\$ 4,000	-1.8	-0.5	-3.3	+5.7	+47	+77	+105	+93	+12	+1.5	-3.7	+58	+7.4	+0.6	+0.0	+0.5	+1.6	+0.17	\$102	\$98	\$101	\$103
		HBR	43%	35%	57%	74%	68%	69%	73%	66%	51%	70%	35%	58%	56%	58%	59%	53%	50%	40%				
ARDCAIRNIE N168 ^{SV} 19-May-2017 ARDCAIRNIE H35 ^{SV} ARDCAIRNIE E31 ^{SV} ARDCAIRNIE FLORAL H176 [#] ARDCAIRNIE FLORAL Z134 [#]	44	\$ 4,000	-2.4	+0.0	-2.2	+4.4	+41	+68	+94	+84	+10	+0.3	-2.6	+49	+6.0	-0.3	-1.2	+0.7	+1.5	+0.01	\$88	\$89	\$85	\$90
		HBR	44%	36%	57%	74%	68%	69%	73%	67%	54%	71%	36%	58%	56%	57%	58%	52%	50%	41%				
ARDCAIRNIE N181 ^{SV} 20-May-2017 ARDCAIRNIE H10 ^{SV} TEHAMA SCHWARZENEGGER N600 [#] ARDCAIRNIE ISOBEL K53 [#] ARDCAIRNIE ISOBEL A144 ^{SV}	46	\$ 4,000	-1.3	+0.9	-4.4	+5.4	+49	+88	+116	+114	+14	+1.6	-3.8	+66	+5.0	-0.7	-1.0	+0.5	+1.7	+0.08	\$109	\$105	\$115	\$108
		HBR	45%	37%	63%	74%	68%	69%	73%	66%	52%	70%	38%	58%	57%	58%	59%	54%	52%	42%				
ARDCAIRNIE N187 ^{SV} 21-May-2017 SYDGEN BLACK PEARL 2006 ^{PV} TE MANIA BARDO B275 ^{SV} ARDCAIRNIE GEORGINA J193 [#] ARDCAIRNIE GEORGINA F126 [#]	48	\$ 4,500	+4.2	+5.5	-7.2	+1.6	+42	+77	+100	+60	+18	+1.2	-4.9	+62	+5.4	-0.3	-1.7	+1.0	+1.9	+0.29	\$122	\$118	\$127	\$120
		HBR	55%	50%	63%	75%	71%	72%	75%	70%	62%	73%	41%	63%	62%	63%	63%	58%	58%	48%				
Breed Average EBVs / \$Indexes			+0.2	+0.4	-4.0	+4.3	+44	+81	+106	+91	+15	+1.8	-4.2	+59	+5.1	+0.0	-0.2	+0.4	+1.7	+0.19	\$114	\$108	\$119	\$111

ARDCAIRNIE ANGUS REDUCING CATALOGUE - 17 MARCH 2019

BULL NAME Date of Birth SIRE (See Reference Sires) Sire of Dam DAM Dam of Dam	January 2019 figures.																							
	Lot No.	Price Register	Calving Ease Direct (%)	Calving Ease Dtrs (%)	Gest. Lenth (Days)	Birth Wt. (kg)	200 Day Wt. (kg)	400 Day Wt. (kg)	600 Day Wt. (kg)	Mature Cow Wt. (kg)	Milk (kg)	Scrotal Size (cm)	Days to Calving (days)	Carcase Wt (kg)	Eye Muscle Area (sq.cm)	Rib Fat (mm)	Rump Fat (mm)	Retail Beef Yield (%)	IMF (%)	NFI-F	Angus Breeding Index (\$)	Domestic Index (\$)	Heavy Grain Index (%)	Heavy Grass Index (%)
ARDCAIRNIE N211 ^{SV} 23-May-2017 ARDCAIRNIE K156 ^{SV} SYDGEN C C & 7 [#] ARDCAIRNIE PROUDRAM J123 [#] ARDCAIRNIE PROUDRAM F230 [#]	51	\$ 4,000	+0.9	+1.4	-1.8	+3.9	+42	+80	+105	+81	+15	+2.2	-5.7	+57	+2.8	+0.4	+0.2	+0.3	+2.1	+0.23	\$120	\$111	\$128	\$115
		HBR	43%	35%	63%	73%	68%	69%	72%	66%	50%	70%	37%	58%	55%	56%	58%	52%	49%	41%				
ARDCAIRNIE N214 ^{SV} 24-May-2017 ARDROSSAN JUSTICE J93 ^{SV} TE MANIA EMPEROR E343 ^{PV} ARDCAIRNIE GEORGINA J97 [#] ARDCAIRNIE GEORGINA C79 [#]	52	\$ 4,000	+3.5	+2.0	-6.0	+1.8	+38	+75	+95	+85	+17	+1.3	-6.0	+57	+5.3	+2.1	+1.1	-0.7	+2.9	+0.6	\$118	\$109	\$130	\$112
		HBR	50%	44%	69%	74%	68%	66%	66%	63%	56%	62%	41%	58%	58%	60%	58%	55%	52%	50%				
ARDCAIRNIE N223 ^{SV} 25-May-2017 ARDCAIRNIE H33 ^{SV} B/R NEW FRONTIER 095 [#] ARDCAIRNIE PROUDRAM A61 [#] ARDCAIRNIE PROUDRAM X7 [#]	53	\$ 4,000	-2.3	+0.8	-3.4	+6.4	+50	+76	+106	+103	+9	+2.1	-5.4	+61	+5.2	-0.5	-1.2	+1.1	+1.4	-0.1	\$105	\$99	\$107	\$103
		HBR	48%	42%	65%	75%	70%	71%	74%	68%	58%	73%	42%	61%	60%	60%	62%	56%	54%	46%				
ARDCAIRNIE N240 ^{SV} 28-May-2017 ARDCAIRNIE J27 ^{SV} RITO 4L6 OF 2536 208 [#] ARDCAIRNIE GEORGINA D113 [#] ARDCAIRNIE GEORGINA Y47 [#]	56	\$ 4,250	+0.6	+1.7	-5.9	+4.9	+53	+94	+121	+120	+11	+0.9	-4.0	+79	+4.9	+0.0	-1.3	+0.4	+1.6	+0.14	\$116	\$112	\$122	\$115
		HBR	48%	39%	68%	75%	71%	71%	75%	68%	58%	72%	41%	64%	63%	64%	64%	60%	60%	54%				
ARDCAIRNIE N268 ^{SV} 2-Jun-2017 ARDCAIRNIE H10 ^{SV} CONNEALY FORMATION 60C [#] ARDCAIRNIE ABBIE E87 [#] ARDCAIRNIE ABBIE B12 [#]	60	\$ 4,000	-0.5	+1.6	-4.5	+4.5	+45	+81	+97	+75	+14	+0.4	-5.5	+57	+7.0	+0.3	-0.6	+0.9	+1.0	+0.08	\$105	\$109	\$99	\$106
		HBR	45%	37%	63%	74%	69%	70%	73%	67%	54%	71%	38%	59%	57%	58%	59%	53%	51%	41%				
ARDCAIRNIE N286 ^{SV} 7-Jun-2017 KOOJAN HILLS REALITY K46 ^{SV} BEN NEVIS ZEXAR Z86 ^{PV} ARDCAIRNIE ABBIE E116 [#] ARDCAIRNIE ABBIE Z175 [#]	63	\$ 4,000	+0.7	+2.4	-6.8	+4.7	+45	+78	+101	+89	+12	+2.5	-7.2	+58	+6.4	-1.0	-1.1	+1.6	+1.3	+0.01	\$121	\$115	\$125	\$116
		HBR	47%	36%	66%	75%	69%	69%	70%	65%	55%	67%	38%	58%	55%	56%	57%	52%	50%	41%				
Breed Average EBVs / \$Indexes			+0.2	+0.4	-4.0	+4.3	+44	+81	+106	+91	+15	+1.8	-4.2	+59	+5.1	+0.0	-0.2	+0.4	+1.7	+0.19	\$114	\$108	\$119	\$111

ARDCAIRNIE ANGUS REDUCING CATALOGUE - 17 MARCH 2019

BULL NAME Date of Birth SIRE (See Reference Sires) Sire of Dam DAM Dam of Dam	January 2019 figures.																							
	Lot No.	Price Register	Calving Ease Direct (%)	Calving Ease Dtrs (%)	Gest. Lenth (Days)	Birth Wt. (kg)	200 Day Wt. (kg)	400 Day Wt. (kg)	600 Day Wt. (kg)	Mature Cow Wt. (kg)	Milk (kg)	Scrotal Size (cm)	Days to Calving (days)	Carcase Wt (kg)	Eye Muscle Area (sq.cm)	Rib Fat (mm)	Rump Fat (mm)	Retail Beef Yield (%)	IMF (%)	NFI-F	Angus Breeding Index (\$)	Domestic Index (\$)	Heavy Grain Index (%)	Heavy Grass Index (%)
CONNEALY FORMATION 60C# 7-Jun-2017 ARDCAIRNIE J27^{SV} OAKCHURCH FIELD MARSHALL K143 ^{SV} ARDCAIRNIE FLORAL J103 [#] ARDCAIRNIE FLORAL D57 [#]	64	\$ 4,500	-2.0	+0.0	-5.6	+6.4	+57	+100	+136	+124	+10	+1.4	-4.4	+88	+5.2	+0.5	-0.7	+0.5	+1.2	+0.27	\$123	\$111	\$127	\$122
HBR		42%	35%	67%	73%	68%	69%	72%	66%	52%	69%	36%	60%	59%	61%	61%	57%	57%	50%					
ARDCAIRNIE N299 10-Jun-2017 ARDCAIRNIE H33^{SV} S A NEUTRON 377 [#] ARDCAIRNIE BAKESS C144 [#] ARDCAIRNIE BAKESS W41 [#]	67	\$ 4,250	-2.1	+1.4	-3.2	+5.3	+49	+81	+105	+95	+10	+0.5	-3.9	+64	+8.2	+0.3	+0.1	+0.8	+1.0	-0.03	\$102	\$102	\$95	\$105
HBR		47%	40%	64%	75%	70%	70%	73%	67%	57%	71%	42%	60%	58%	59%	60%	55%	53%	45%					
ARDCAIRNIE N304^{SV} 11-Jun-2017 ARDCAIRNIE K122^{SV} HIGHLANDER OF STERN AB [#] ARDCAIRNIE JOYCE F65 [#] ARDCAIRNIE JOYCE A137 [#]	68	\$ 4,250	+1.9	+0.8	-4.2	+4.0	+46	+83	+109	+96	+16	+2.1	-4.8	+63	+5.4	-0.3	+0.2	+0.8	+1.0	+0.33	\$112	\$109	\$109	\$113
HBR		44%	36%	63%	73%	68%	69%	72%	66%	52%	69%	37%	58%	56%	56%	58%	52%	50%	43%					
ARDCAIRNIE N319^{SV} 18-Jun-2017 ARDCAIRNIE K156^{SV} SYDGEN TRUST 6228 [#] ARDCAIRNIE ABBIE J25 [#] ARDCAIRNIE ABBIE G86 [#]	69	\$ 4,250	-0.5	+1.9	-2.0	+4.7	+47	+83	+107	+96	+14	+1.6	-5.4	+63	+4.8	+0.0	-0.7	+0.3	+2.2	+0.03	\$115	\$109	\$124	\$111
HBR		45%	39%	63%	74%	68%	69%	72%	66%	52%	69%	39%	58%	55%	56%	58%	52%	50%	44%					
ARDCAIRNIE N112SV 9-May-2017 THOMAS UP RIVER 1614PV G A R OBJECTIVE 7125# ARDCAIRNIE BAKESS G133# ARDCAIRNIE BAKESS C97#	71	\$ 4,000	+0.1	+0.8	-4.1	+5.5	+61	+111	+145	+111	+20	+1.8	-4.0	+80	+4.4	-0.5	-0.8	+0.7	+1.7	+0.12	\$140	\$127	\$148	\$137
HBR		52%	43%	69%	75%	71%	72%	75%	69%	61%	73%	39%	62%	62%	63%	63%	58%	58%	46%					
ARDCAIRNIE N238^{SV} 28-May-2017 ARDCAIRNIE K122^{SV} ARDCAIRNIE B34 ^{SV} ARDCAIRNIE GEORGINA E231 [#] ARDCAIRNIE GEORGINA W67 [#]	72	\$ 4,250	+1.7	+2.2	-3.4	+3.2	+46	+85	+109	+83	+19	+2.2	-5.6	+66	+6.6	-0.8	-1.2	+1.4	+1.0	+0.15	\$120	\$117	\$119	\$119
HBR		43%	34%	58%	74%	69%	69%	73%	67%	53%	70%	37%	58%	57%	58%	59%	53%	51%	41%					
Breed Average EBVs / \$Indexes			+0.2	+0.4	-4.0	+4.3	+44	+81	+106	+91	+15	+1.8	-4.2	+59	+5.1	+0.0	-0.2	+0.4	+1.7	+0.19	\$114	\$108	\$119	\$111

ARDCAIRNIE ANGUS REDUCING CATALOGUE - 17 MARCH 2019

BULL NAME Date of Birth SIRE (See Reference Sires) Sire of Dam DAM Dam of Dam	January 2019 figures.																							
	Lot No.	Price Register	Calving Ease Direct (%)	Calving Ease Dtrs (%)	Gest. Lenth (Days)	Birth Wt. (kg)	200 Day Wt. (kg)	400 Day Wt. (kg)	600 Day Wt. (kg)	Mature Cow Wt. (kg)	Milk (kg)	Scrotal Size (cm)	Days to Calving (days)	Carcase Wt (kg)	Eye Muscle Area (sq.cm)	Rib Fat (mm)	Rump Fat (mm)	Retail Beef Yield (%)	IMF (%)	NFI-F	Angus Breeding Index (\$)	Domestic Index (\$)	Heavy Grain Index (%)	Heavy Grass Index (%)
ARDCAIRNIE N264^{SV} 1-Jun-2017 KOOJAN HILLS REALITY K46^{SV} ARDCAIRNIE F96 ^{SV} ARDCAIRNIE BAKESS J290 [#] ARDCAIRNIE BAKESS Y2 [#]	73	\$ 4,500	+3.1	+4.3	-7.3	+3.2	+47	+87	+112	+97	+14	+1.7	-5.5	+63	+5.2	+0.2	+0.4	+0.5	+1.7	+0.12	\$128	\$120	\$133	\$125
		HBR	46%	37%	64%	75%	69%	70%	73%	66%	53%	71%	37%	59%	58%	59%	60%	54%	52%	44%				
ARDCAIRNIE N277^{SV} 4-Jun-2017 ARDCAIRNIE K122^{SV} KOOJAN HILLS VENTURA B156 ^{SV} ARDCAIRNIE ABBIE E203 [#] ARDCAIRNIE ABBIE W30 [#]	75	\$ 4,750	-0.8	+0.8	-1.1	+5.2	+50	+92	+122	+112	+15	+1.7	-3.8	+73	+5.0	-1.6	-2.0	+1.3	+0.7	+0.02	\$110	\$108	\$109	\$111
		HBR	43%	34%	57%	73%	65%	63%	64%	61%	52%	52%	35%	53%	49%	53%	51%	48%	46%	39%				
Breed Average EBVs / \$Indexes			+0.2	+0.4	-4.0	+4.3	+44	+81	+106	+91	+15	+1.8	-4.2	+59	+5.1	+0.0	-0.2	+0.4	+1.7	+0.19	\$114	\$108	\$119	\$111